



COMPANY PROFILE

Pioneer in Aluminium Fabricated Products

www.indalcorp.com

INDALEX[®]
PT. INDAL ALUMINIUM INDUSTRY Tbk.

OUR VISION & MISSION

VISION

“ TO BECOME A MARKET LEADER IN THE ALUMINIUM EXTRUSION INDUSTRY IN ASIA THROUGH INNOVATION, CONTINUOUS IMPROVEMENT AND TOTAL COMMITMENT TO POSITIVE GROWTH”

MISSION

“ TO CONTINUOUSLY IMPROVE PRODUCTIVITY AND EFFICIENCY TO ENHANCE STOCKHOLDERS VALUE “

COMPANY

PROFILE

ESTABLISHED IN 1971

WENT PUBLIC SINCE 1994
LISTED IN THE JAKARTA STOCK EXCHANGES

MAIN BUSINESS LINES

- ARCHITECTURAL PRODUCT;
- CLIMBING PRODUCTS;
- SOLAR RELATED PRODUCTS,
- ELECTRONIC & PRECISION PARTS
- OTHER COMODITIES



Current issue date:
Expiry date:
Certificate identity number:

24 January 2020
23 January 2023
10253591

Original approval(s)
ISO 9001 - 7 December 1998

Certificate of Approval

This is to certify that the Management System of:

PT Indal Aluminium Industry Tbk

Maspion Unit I, Desa Sawotratap, Gedangan Sidoarjo, Surabaya, 61254, Indonesia

has been approved by Lloyd's Register to the following standards:

ISO 9001:2015

Approval number(s): ISO 9001 – 0044948

The scope of this approval is applicable to:

The Manufacture of Aluminium Billets, Coated or Uncoated Extrusions, Fabrication & Assembly of Architectural Building systems, Machining Parts, Ladders, Planks and Fabricated Aluminium products

Luis Cunha

Area Operations Manager - SAMEA

Issued by: PT. Lloyd's Register Indonesia

for and on behalf of: Lloyd's Register Quality Assurance Limited



Lloyd's Register Group Limited, its affiliates and subsidiaries, including Lloyd's Register Quality Assurance Limited (LRQA), and their respective officers, employees or agents are, individually and collectively, referred to in this clause as 'Lloyd's Register'. Lloyd's Register assumes no responsibility and shall not be liable to any person for any loss, damage or expense caused by reliance on the information or advice in this document or howsoever provided, unless that person has signed a contract with the relevant Lloyd's Register entity for the provision of this information or advice and in that case any responsibility or liability is exclusively on the terms and conditions set out in that contract. Issued by: PT. Lloyd's Register Indonesia, LRQA Indonesia, Duta Tower 1 12th Floor, Kawasan Mega Kuningan, Jl. Negeri Kuningan Barat IX Kav. 64.3 No 1, Jakarta 12560, Indonesia for and on behalf of: Lloyd's Register Quality Assurance Limited, 1 Trinity Park, Bickenhill Lane, Birmingham B37 7YS, United Kingdom.

Page 1 of 1

QUALITY POLICY STATEMENT



Supply the products that satisfy the customer requirements with respect to quality, delivery and price



Improve performance of suppliers / subcontractors.



Optimize work flows and manufacturing process to reduce defect.



Develop competent manpower in achieving company goal

ISO 9001:2000 Accreditation
from Lloyd's Register's
Quality Assurance



PLANT AREAS

TOTAL FACTORY AREA = 141,500 SqM

LOCATIONS :

- Surabaya (Land & Building) : 60,000 SqM
 - Extrusion Plant (Building Only) : 34,000 SqM
 - Fabrication Plant (Building only) : 9,100 SqM
- Jakarta (Land & Building) : 31,500 SqM
 - Fabrication Building : 7,000 SqM
 - Fabrication Plant : 24,000 SqM



EXTRUSION FACILITIES

Production Capacity
up to 1800 MT/month

EXTRUSION PRESS LINES

1 Unit of 2750 UST Press Machine

- ☐ 2750 UST direct extrusion press
- ☐ Cylinder Diameter 9 "

- ☐ Single Puller
- ☐ Double Puller
- ☐ Hot Log Shear-billet optimization
- ☐ Pre Cut-billet

3 Unit of 2000 UST Press Machines

- ☐ 2000 UST direct extrusion press
- ☐ Cylinder Diameter 7 "

4 Unit of 1200 UST Press Machine

- ☐ 1200 UST direct extrusion press
- ☐ Cylinder Diameter 5"

1 Unit of 850 UST Press Machine

- ☐ 850 UST direct extrusion press
- ☐ Cylinder Diameter 4 "

1 Unit of 700 UST Press Machine

- ☐ 700 UST direct extrusion press
- ☐ Cylinder Diameter 4



PROCESS CONTROL PLAN (Extrusion)

Doc. No. : WP 09.5
Rev Status : 8
Date : 02.09.22

Process/Stage	Control Parameter	Specification/Standard	Frequency & Sample size	Measuring Instrument/Method	WI / WIT	Doc No.	Checked by
	1. Die temperature Die Soaking Time	For solid minimum 460°C For hollow minimum 480°C For solid 3 – 12 hours For hollow 4 – 12 hours (According to internal standard practice)	For all the Dies before Die Loading and 100%	Thermocouple – Temp. Indicator Clock/Watch	WI 09.05.1	09.03.3	Press operator & Supervisor
	2. Billet temperature Billet Length Alloy & Traceability	420°- 520°C As per work order As per work order & Cast number on billet	For all billet used and 100% For all billet used and 100% For all billet used and 100%	Thermocouple - Temp. Indicator Control Pane Color Code & Visual	WI 09.05.2	09.05.31	Press operator & Supervisor Press operator & Supervisor Press operator & Supervisor
	3. Dimension Weight/meter	As per section drawing/Internal Quality Standards As per section drawing	For all profile running and 2 nd & every 10 billets For all profile run and one times rolling: 100% check for dimension rework	Dial Calliper, Micrometer, Profile Comparator, Tri-Square, Weighing scale	WI 09.05.3 WI 10.05.1 WI 09.05.6	10.01.0a 10.01.0b	Process Inspector & Supervisor
	4. Surface Quality (for die lines, flow lines, streaks, blisters, scratches, inclusion, tearing, etc)	Visual Inspection/Internal Quality Standards	Every batch of production and 100 %	Visual and as per approved samples	WI 09.05.3 WI 10.05.1 WI 09.05.4 WI 10.01 WI 09.05.6	10.01.1	Process Inspector & Supervisor
	5. Flatness Angularity	As per section drawing/Internal Quality Standards	For all profile running and 2 nd & every 10 billets Rolling: 100% check for rework	Feeler Gauge and Tri Square Bevel Protractor/Arc/Gauge	WI 09.05.3 WI 10.05.1 WI 09.05.6	10.01.0a 10.01.0b	Process Inspector & Supervisor
	6. Cut Length	As per customer order Cut length Tolerance: As per internal Quality standards	Every lot of Production – First Cutting	Measuring Tape	WI 09.05.4	09.05.31	Operator & Supervisor
	7. Twist Bend	Section Drawing/Internal Quality Standards Section Drawing/Internal Quality Standards	Every lot of Production and Random Every lot of production and Random	Surface Table & feeler gauge Surface Table & feeler gauge	WI 09.05.4 WI 09.05.6 WI 10.01	10.01.1 10.01.1	Process Inspector & Supervisor Process Inspector & Supervisor
	8. Ageing Cycle (Ageing Temperature/Time)	6005T6, 6005AT6, 6060T6, 6063T6, 6061T6 = 6 Hours±30min (185°C±5°C) 6060T5, 6060T595, 6063T5, 6463T5 = 4-5 Hours±30min (185°C±5°C) 6060T52, 6063T52 = 3-4 Hours±30min (145°C±5°C) 6060T1, 6060T4, 6060T591, 6063T4 = No Ageing	As per order	Temperature Recorder	WI 09.05.5	09.05.34	Process Inspector & Supervisor
	9. Hardness	As per Internal Quality Standards	All types of sections and random sampling as WI	Hardness Tester	WI 09.05.5 WI 10.01 WI 10.05.3	09.05.34	Process Inspector & Supervisor

Approved by:

Date: 2 Sep 2022



Die Manufacturing

- CNC Lathe (CL 25)
- CNC Lathe (CL 253)
- CNC Milling (DMC 63)
- CNC Milling (DMU 50)
- CNC Milling (SH 40)
- CNC Milling Engraving (GS2)
- Wire cut 4050T6H40 (GS15) – A
- Wire cut 4050T6H40 (GS15) – B
- Wire EDM (Robo290)
- Wire EDM (DWC 110 HA)
- CNC EDM (V20)
- CNC EDM (M 35J)
- Manual EDM (CJ 43)
- Manual EDM (ZPnc 408)
- Vertical Grinding
- Dies Heat treatment Furnace

Tool Room Facility

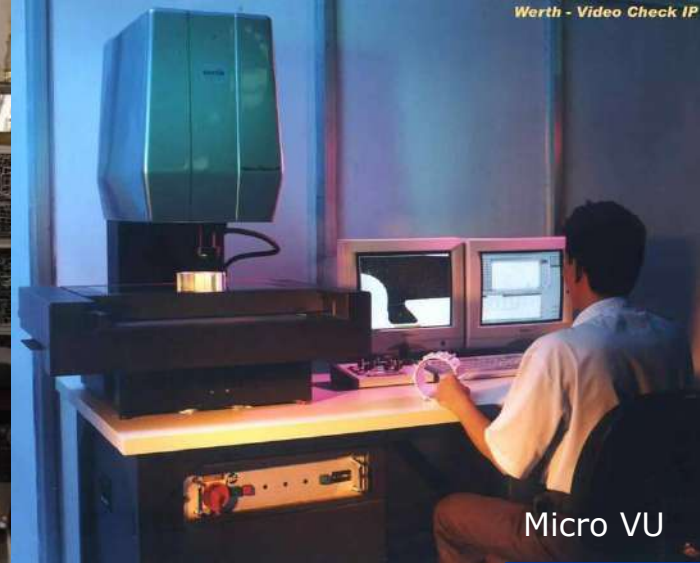
- 4 axis CNC milling center (1 unit).
- Grinding machine (1 unit).
- EDM (1 unit).
- CNC Wire cut machine (1 unit).



OUR MEASUREMENT MACHINES



Tensile Machine



Micro VU

- One Unit Micro VU ~ Non-Contact Measuring Equipment for Dimension Inspection.
- One Unit Mitutoyo CMM Inspection Machine.
- One Unit Broun & Sharp CMM Inspection Machine.
- One Unit Micro VU Profile Comparator.
- One Unit ARL Analytical Spectrometer ~ for chemical analysis.
- One Unit Micro-Hardness Tester ~ for heat-treated dies.
- One Unit Webster & Brinnel and Hardness Testers ~ for measure aluminium extrusion hardness.
- One Unit Yield Strength Test Machine Tensile Machine ~ for Checking Tensile, Elongation Capacity.

Surface Finishing



ANODIZING LINE

Anodizing Production Targets: 800 MT/mo

1 Unit Sand Blasting Machine
2 Mirror Finishing with
Units Polishing Machine with

3 Units hair Line Machine
Colors : Natural, Black, Bronze
Confirming to EN – Standard :
BS 1615, DIN 17611, ISO 7599

ANODIZING CAPACITY PER DAY : 50 TONNAGE

Surface Finishing

HORIZONTAL PAINT LINE

**Production Capacity :
300 – 350 m² / day**

1 Unit Horizontal Paint Line
Conventional Pretreatment facility
(dipping) having Yellow, Green and
Chrome free conversion coatings.
Advanced powder coating and Wet
Painting Technology

2 coat & 3 coat system

KYNAR 500 / LUMIFLUON

Coating thickness

2 coat : 30 – 35 Micron

3 coat : 40 – 50 Micron

Maximum length possible : 6.3 m

Surface Finishing

VERTICAL PAINT LINE

**Production Capacity :
45 ton / day**

1 Unit Vertical Powder Coating Line Pretreatment: Spray type Advanced Vertical Powder Coating technology incoming spray booth with quick cycle color change within 15 minutes

Thickness range : Min 60 microns; as per Qualicoat

Maximum length possible : 6.6 m

PROCESS CONTROL PLAN – PAINT LINE

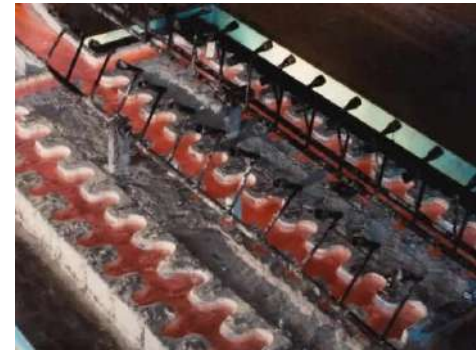
PROCESS/STAGE	CONTROL PARAMETER	SPECIFICATION/STANDARD	FREQUENCY & SAMPLE SIZE	METHOD/MEASURING INSTRUMENT	WI / WIT	Doc No.	CHECKED BY
Pretreatment Process 	1. Tank Parameter a. Temperature / Vertical b. Concentration c. pH d. Conductivity e. Dipping Time	As per supplier product data sheet	1 time/shift (once a day/24 hours per bath) 100%	Thermometer Titration pH meter Conductivity meter Time Control Panel	WP 09.07a WIT 10.07.0	10.03.1 10.03.11 09.07.3	Lab Technician + operator Chemist & Lab Technician Chemist & Lab Technician Chemist & Lab Technician Pretreatment Operator
	2. Visual inspection before racking (scratch, bend, dent, twist, blister, water stained, corrosion, inclusion, die line, die mark)	As per reference samples & Internal Quality Standards (table 17)	100%	Visual	WI 09.07.0	09.07.34	Racking Worker
	3. Visual inspection after chromate a. Visual color b. Surface quality c. Other defects	As per reference samples	100%	Visual	WI 09.07.1	09.07.4	Loading Operator
	4. In-Process a. Viscosity	As per Supplier Product Data Sheet	Every Wet paint used	#2 Zahn Cup	WI 09.07.3	09.07.35	Mixing Operator
	b. Temperature	As per supplier product data sheet	Every change of the color	Honeywell temperature control panel	WI 09.07.2 WI 09.07.3	09.07.31 09.07.36	Prod. Supervisor & Process Inspector
	c. Conveyor speed	Max. 1200 rpm / 2.0 m/min (to achieve curing schedule & thickness)	100%	ED motor control panel	-	09.07.31 09.07.36	Prod. Supervisor & Process Inspector
	d. Curing	As per supplier product data sheet	Once / 2 weeks	DataPac	WI 09.07.6	10.03.13	Head Of Department
	5. Laboratory Test a. Surface Appearance b. Film Thickness c. Adhesion d. Gloss Level e. Bending Test f. Impact Test g. Solvent Test h. Color Uniformity i. Boiling Water Test j. Dry Film Hardness k. Chrome Coating Weight	As per Internal Reference Standard As per supplier product data sheet As per ASTM D 3359-93 or BS 3900-E6 – 1974 ASTM D523-89 As per internal standard As per BS 6496 : 1984 As per supplier product data sheet Visual, as per Internal Reference Standard As per Qualicoat ASTM D3363 ASTM D1730, Designation B449-93 / AS1627.6-1994	3 samples for every change of color & paint mixing Once / 2 weeks	Multilight/Visual Coating thickness gauge Cutter & Adhesion Tape Unigloss 60 (gloss meter) Bending Instrument Impact Instrument Rubbing with cotton using solvent MEK / Xylene / Toluene Minolta Chromameter and/or Visual Immerse for 2 hours Pencil Hardness Immerse 1 part by volume of 65% to 70% (m/m) nitric acid solution & 1 part by volume of water	WIT 10.07.1	10.03.2 10.03.3 10.03.6	Lab Technician
	6. Inspection after painting a. Visual color b. Thickness c. Adhesion d. Surface Quality	As per internal standard sample (table 18) As per supplier product data sheet As per ASTM D 3359-93 or BS 3900-E6 – 1974 As per Internal Quality Standards (table 18)	100% Random check for all incoming racks & every one hour Every colour changes 100%	Visual Positector (thickness gauge) Minitest Cutter & Adhesion Tape Visual	WI 09.07.4 WIT 10.07.1 WIT 10.07.1 -	09.07.31 09.07.31 09.07.36 -	Process Inspector Process Inspector Process Inspector Process Inspector
	7. Final Inspection a. Visual inspection for scratch, bend, dent, twist, blister, water stained, die line, die mark b. Coating Thickness	As per supplier product data sheet or Internal Quality Standards As per supplier product data sheet or internal standard table 18	100% Random sampling as per WI10.1 point 9	Visual Coating thickness gauge	WI 10.01 WI 10.01	10.01.2 10.01.3	QC Inspector QC Inspector

Approved by :

Date :

Melting Shop

- Melting Furnace 1 with capacity 18 MT
- Melting Furnace 2 with capacity 12 MT
- Holding Furnace with capacity 15 MT
- Filtration
- VDC Casting with Hot top capacity
- Homogenizing with capacity 40 MT
- Spectrometer for Alloy Inspection





FABRICATION FACILITY

PROCESS CONTROL PLAN (Fabrication Job Order)

Doc. No. : WP 09.9
Rev. Status : 4
Date : 05.09.22

Process/Stage	Control Parameter	Specification/Standard	Frequency	Measuring Instrument	WI	Doc	Checked by
<pre> graph TD Start([Material Transfer to Fabrication]) --> Cutting[CUTTING] Cutting --> Check1{Check} Check1 -- Not Ok --> CheckRepro{Check for Reproces} Check1 -- Ok --> CNC[CNC / NC] CheckRepro -- Yes --> Scrap[SCRAP] CheckRepro -- No --> Junction(()) CNC --> Check2{Check} Check2 -- Not Ok --> Junction Check2 -- Ok --> Punching[PUNCHING (Router, Mill, Jigsaw, Notch, Clamp)] Punching --> Check3{Check} Check3 -- Not Ok --> Junction Check3 -- Ok --> Assembly[ASSEMBLY] Assembly --> Check4{Check} Check4 -- Not Ok --> Junction Check4 -- Ok --> FinalIns[Final Inspectio] FinalIns --> Packing[Packing & Forwarding] Junction --> CheckRepro </pre>	CUTTING 1. Length 2. Angle Degree (for angular cutting only)	Reference to Cutting Order, Fabrication Drawing Tolerance: $\pm 1\text{mm}$, $\pm 1^\circ$	All types First two pcs start of production for every type	1. Measuring Tape 2. Protractor	WI 09.09.1	09.09.31	1. Process Operator 2. Supervisor
	CNC/NC 3. Diameter 4. Notch/Milling Dimension	Reference to Material List, Fabrication Drawing Tolerance: $\pm 1\text{mm}$	All types First two pcs start of production for every type	1. Measuring Tape 2. Calliper	WI 09.09.2	09.09.31	1. Process Operator 2. Supervisor
	PUNCHING 5. Diameter 6. Notch/Milling Dimension 7. Angle Degree (for angular cutting only)	Reference to Material List, Fabrication Drawing Tolerance: $\pm 1\text{mm}$, $\pm 1^\circ$	All types First two pcs start of production for every type	1. Measuring Tape 2. Calliper 3. Protractor	WI 09.09.3	09.09.31	1. Process Operator 2. Supervisor
	ASSEMBLY 8. Unit Dimension 9. Movement Trial/ Fixing Test	Reference to Shop Drawing, Detail Drawing, Material List Unit Dimension: $\pm 1\text{mm}$ Diagonal (90° check): $\pm 1\text{mm}$	All types First two pcs start of production for every type	1. Measuring Tape 2. Protractor 3. Visual	WI 09.09.4	09.09.31	1. Process Operator 2. Supervisor
	10. Final inspection for dimension & assembly	As per Fabrication drawing	AQL sampling general inspection level I and AQL 1.0	1. Measuring tape 2. Protractor 3. Calliper 4. Visual	WI 10.09	10.09.14	Final Inspection Inspector
	PACKING 11. Type – Part, quantity	Reference to Material List	Not Applicable	Not Applicable	WI 15.03 WI 15.02 WI 15.04	01.00.00	1. Operator (Packer) 2. Supervisor
<p>Approved by: _____</p> <p>Date: _____</p>							

NOTE:

- This is the general flow of the process. However the process shall be followed according to fabrication drawing.
- The tolerance mentioned in the PCP is general tolerance. However the tolerance can be altered based on application or as per customer specification.

Fabrication Facilities

SURABAYA area

For Aluminium Extrusion Purpose

- ❖ 6 Units of CNC Machining Center range 1 – 5 axis
- ❖ 4 Units of Double saw machine
- ❖ 4 Units of Punching Machine
- ❖ 4 Units of notching & milling machine
- ❖ 1 Unit of crimping machine
- ❖ 1 Unit of stretching machine
- ❖ 1 Unit of roll machine
- ❖ 1 Unit of route machine
- 1 Unit of sharing machine
- 4 Units of Bending Machine
- 4 Units of Welding Machine
- 1 unit of CNC Punching machine
- 1 unit of Manual Punching machine
- 1 unit of rolling machine
- 1 unit of Grooving machine
- ❖ 2 Units of tapping machine
- ❖ 1 Unit of thermal brake assembly machine
- ❖ 6 Units of CNC Tapping Center range 1 – 4 axis
- ❖ 9 Units of CNC Machining Center range 1 – 5 axis
- ❖ 2 Units of CMM machine
- ❖ 3 Units of Double saw machine
- ❖ 3 Units of Single saw machine
- ❖ 1 Unit of Manual Milling machine

- 4 Units of Punching Machine
- 5 Units of Tapping Machine
- 2 Units of Boring Machine
- 2 Units of Bending Hydraulic Machine
- 43 Units of Punching Machine 6
- 4 Units of Bending Machine
- 2 Units of CNC Purpose Machine
- 5 Units of Multi Drill Machine
- 4 Units of Drilling Machine
- 9 Units of Swagging Machine
- 3 Units of Grooving Machine
- 4 Units of Oven Machine
- 8 Units of Cutting Machine
- 5 Units of Press Machine
- 2 Units of Rolling machine
- 4 Units of Welding Machine

Curtain Wall Part fabricated up to 1,700 pcs / day



Metal Analyzer 3460

CMM Mistral
070705

CMM Beyond
Crysta C 9206

FABRICATION FACILITIES

JAKARTA Assembling Facility INCLUDING Fabrication



- ❑ 6 Unit of Cutting Machine
- ❑ 1 Unit of Milling Machine
- ❑ 1 Unit of Router Machine
- ❑ 3 Units of Punch Machine
- ❑ 3 Units of Silicone Pump Mixing Machine



Assembling Plant



Production Capacity up to 160 Units/days

Meet AS/NZS, EN, ANSI Standards

Meet AS/NZS, EN, ANSI Standards



Ladder Testing Center



No. Z1 103192 0003 Rev. 00

Holder of Certificate: PT. Indal Aluminium Industry Tbk
Desa Sawatratap, Gedangan
Masjion Unit 1
61254 Sidoarjo, Surabaya
INDONESIA

Certification Mark:



Product: Standing step ladders

The product was tested on a voluntary basis and complies with the essential requirements. The certification mark shown above can be affixed on the product. It is not permitted to alter the certification mark in any way. In addition, the certification holder must not transfer the certificate to third parties. This certificate is valid until the listed date, unless it is cancelled earlier. All applicable requirements of the testing and certification regulations of TÜV SÜD Group have to be complied. For details see: www.tuv.sud.com/pa-cert

Test report no.: MES1885915A00TR

Valid until: 2027-03-10

Date, 2022-03-22

(GIANPAOLO MENSA)

Page 1 of 2
TÜV SÜD Product Service GmbH • Certification Body • Radenstraße 65 • 80339 Munich • Germany

No. Z1 103192 0003 Rev. 00

Model(s): 30090218
30090418
30090618
30090818

Parameters:

M-QIP REGISTAR Q3-08							
		OTKUP MATERIJALA		MUPSI MATERIJAL			
Proizvodni Kod	Proizvodni Opis	Debljina list (mm)	Debljina valja (mm)	Materijal	Rasp/Dup- činica	Max. tež. po m ² listova	Materijal
30000018	MIGAS-TP-2 140AD	0,12	3,1	Floorpan	60 mm	150kg	Aluminij
30000019	MIGAS-TP-4 140AD	0,12	3,1	Floorpan	60 mm	150kg	Aluminij
30000018	MIGAS-TP-3 140AD	0,12	3,1	Floorpan	60 mm	150kg	Aluminij
30000018	MIGAS-TP-3 140AD	0,12	3,1	Floorpan	60 mm	150kg	Aluminij

Tested according to: EN 131-1:2015/A1:2019
EN 131-2:2010/A2:2017
EN 131-3:2018

Page 2 of 2
TÜV SÜD Product Service GmbH • Certification Body • Rottembaße 65 • 80329 Munich • Germany

Our Product

Precision Machined Parts



Aluminium Frames for Solar Panels



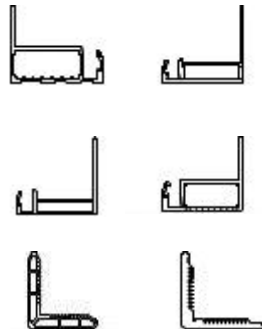
Supply solution for PV Module manufacturers in USA, Canada and Germany: Indal provides cost effective and flexible production with fully automatic fabrication machines

Manufactured from high quality aluminium extrusions and anodized coating

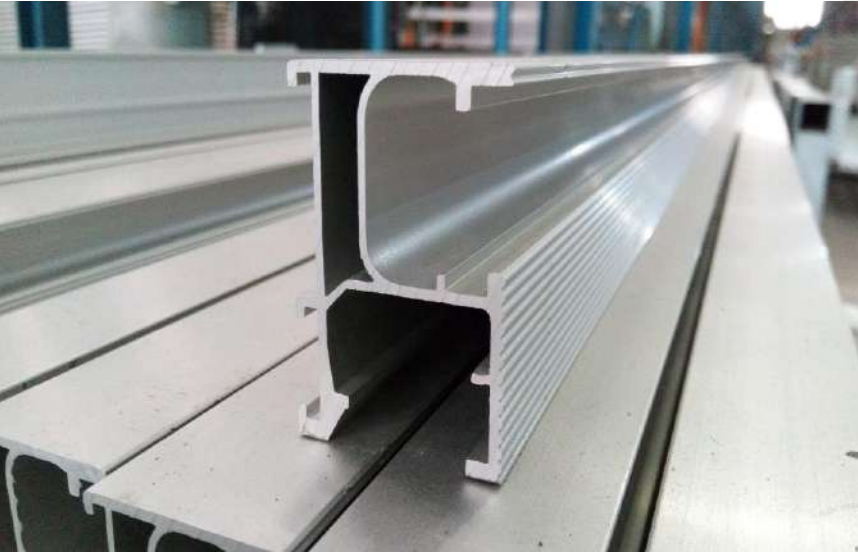
Precise cutting up to ± 0.3 mm to ensure tight-fitting assembly and durability

Maximum length of 2.5 m for the frames

Capacity: 8,000 frame sets per day



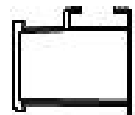
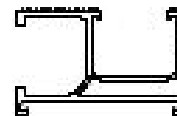
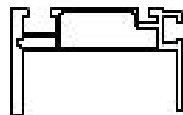
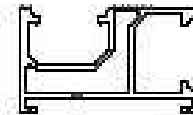
Aluminium Mounting Systems for Solar Panels



Made of high quality aluminium alloy and anodized coating to meet performance warranty of the industry standards



Supply to USA and Australia



THE LATEST PROJECT 2021 - 2022

THE PINNACLE OF
HARMONY

South hills
APARTMENT



MENARA JAKARTA



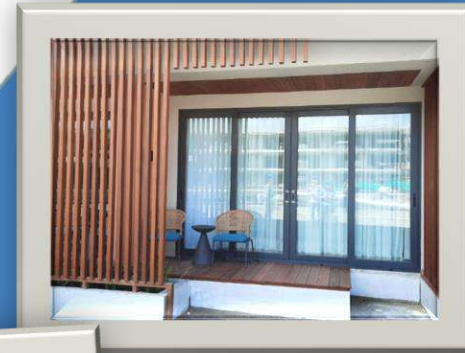
Rajawali
TOWER



ONE GALAXY

SURABAYA

THE LATEST PROJECT 2021 - 2022



Sahid
Bali
HOTEL

THE LATEST PROJECT 2021 - 2022



La Vie
apartment



South **QUARTER**
Jakarta



ANOTHER PROJECTS (SINGAPORE)

- One Raffles Link
- Cisco Project
- Costa Rhu
- 39 Robinson Road – Hexagon
- AMP Changi
- Toh Tuck Link
- Hewlett Packard

MARINA BAY FINANCIAL CENTRE (SINGAPORE)



The Client :
BFC Development Pte Ltd 10 Collyer Quay, #11-11 Ocean Building,
Singapore 049315

The Concept Architect :
* Kohn Pederson Fox Associates PC (KPF)
* Civil & Structural / Mechanical & Electrical Meinhardt Consulting
Engineers, Planners, Managers Meinhardt (Singapore) Pte Ltd.

Facade Consultant : ALT Limited
Main Contractor : Kajima - Tiong Seng JV
Curtain Wall Contractor: Permasteelisa Singapore Pte Ltd

Height: T1 (33Floors) 186mH & T2 (51Floors)239mH
Scope of work: Supply and painted aluminium extrusion

101 TAIPEI FINANCIAL CENTER (TAIPEI, TAIWAN)



Client Taipei Financial Center
Corporation

Architects : CY Lee & Partners
Architects/ Planners

General Contractor :
Kumagai Gumi Group, Taiwan Kumagai
Co., Rsea Engineering Co., Ta-Yo-Wei
Construction Co.,JV.(KTRTJV)

Curtain Wall Consultant :
ALT Cladding & Design, Inc.

Curtain Wall Contractor :
Josef Gartner & Co. (HK) Ltd. Taiwan Branch
Curtain Wall System : Unitized
Height : 101 Floor
Completion : December 2004
Scope of Work :
Supply and fabrication painted extrusion

OVERSEAS PROJECT REFERENCES

Client: Tung Chang Development Co., Ltd
Architect: RTKL Tung Li Development Co., Ltd
Main Contractor: International Engineering & Construction Corp

Curtain Wall Consultant: Bright Metal Co., Ltd
Curtain Wall System: Unitized
Façade Contractor: Permasteelisa
Completion: October 2015
Scope of work: Supply and painted extrusion

DREAM MALL (KAOHSIUNG, TAIWAN)





ANOTHER PROJECTS (TAIWAN)

- ❖ CEC2 Tun Hwa
- ❖ MXIC Project, Taipei
- ❖ Windbond Taipei
- ❖ Yageo Project

OVERSEAS PROJECT REFERENCES

MEDIA TEK HQ (HSIN CHU, TAIWAN)

Client: Meadia Tek Corporation

Architect: JJ Plan & Partners

Main Contractor: Fu Tsu Construction

Facade Contractor: Mega Facade Corp.

Curtain Wall System: Unitized

Height: 11 Floors

Completion: June 2006

Scope of Work: Supply and Fabrication Painted Extrusion



CENTEC TOWER



72-74 Nguyễn Thị Minh, Khai Street-W.6-D.3, (HO CHI MINH CITY-VIETNAM)

Owner : SPN Corporation - Vietnam

Architect : Benoy - Hongkong

Main Consultant : WSP Hongkong LTD

Sub Consultant : CCI-VN

Main Contactor : Construction Company No 14-
Vietquang JVC-Vietnam

Facade Consultant : YKK AP Singapore PTE LTD-
Singapore

Facade Contractor : Quan Dat CO.LTD

Height of Building : 95,1 M

System Building : 22 Storey + 1 Basement + 1

Technical 1 overrun + lift Motor + 1 Roof

Scope of Work : Design, Supply & Installation

Unitized Curtain Wall (Facade)

OVERSEAS PROJECT REFERENCES

SAILING TOWER

**51 Nguyen Thi Minh Khai Street, D.1,
(HO CHI MINH CITY – VIETNAM)**

Owner : General
Construction Co No.1 -
Vietnam

Architect : Benoy-Hongkong
Main Consultant : WSP
Hongkong LTD

Sub Consultant : CCI-VN
Main Contractor

: Construction Company No
14-Vietquang JVC-Vietnam

Facade Contractor
: Quandat Co.,LTD

Height of Building : 95.3 m
System Building : 21 Storey
+ 1 Basement + 1 Roof

Scope of Work Design,
Supply & Installation
Unitized Curtain Wall
(facade)



OVERSEAS PROJECT REFERENCES

Gemadept Office Building 2BIS-4-6 Le Thanh Ton Street,D.1 (HO CHI MINH CITY -VIETNAM)



Owner: GEMADEPT - Vietnam
Architect : DCMSTUDIO
Consultant : Meinhardt (Vietnam) LTD
Main Contractor : COTECCONS
(Vietnam)

Facade Contractor : QUANDAT CO.,LTD
Facade Contractor : QUANDAT CO.,LTD

Height of Building : 84.6m
System Building : 20 storey + 1
Basement + 1 Roof

Scope of Work : Design, Supply &
Intallation Unitized Curtain Wall
(facade)

THE LINK CT 1 (Hanoi)

Client : Citra Westlake City
Development
Architect : PT. Airmas Asri
Main Contractor : UDIC – LACHONG
Facade Contractor : PT. INDALLEX

Location : Hanoi, Vietnam
Curtain Wall System : Unitized
System
Area :13.200 m2
Completion : Maret 2012

Scope of work :Unitized Curtain
Wall, aluminium composite
cladding, Louvre/grill



Builders : Multiplex
Architect: Hassel SPT
Facade Contractor : Permasteelisa

Curtain Wall System: Unitized
Completion : 2004
Scope of Work : Supply & painted extrusion

50 LONSDALE STREET (MELBOURNE, AUSTRALIA)



OVERSEAS PROJECT REFERENCES

Client: Greencliff(CPL) Development PTY Ltd
Builders : Multiplex
Lead Architect : Foster & Partners
Local Colaborating Architect : PTW Architect
Facade Contractor : Permasteelisa

Curtain Wall System: Unitized
Completion : 2004
Scope of Work : Supply & painted extrusion

REGENT PLACE (SYDNEY, AUSTRALIA)



OVERSEAS PROJECT REFERENCES



801 street Hawaii

Curtain Wall System :
Unitized

Scope of work :
Supply, painted,
fabricated and
assembling

Halekauwilla Hawaii



WAIHONUA at KEWALO HAWAII



Owner: Swire Properties Ltd

Architect: Wong & Ouyang (H.K.) Ltd

Main Contractor: Gammon Skanska Ltd

Curtain Wall Consultant: Meinhardt Façade Tech. (H.K.) Ltd

Façade Contractor: Builders Federal H.K

Curtain Wall System: Unitized

Height: 38 Floor:

Scope of work: Supply & fabrication painted extrusion and sheet

THREE PACIFIC PLACE (HONG KONG)



OVERSEAS PROJECT REFERENCES

THOMSON ROAD (HONG KONG)



Owner: Tak Shing Investment Co., Ltd

Architect: Rocco Design Limited Architects & Engineers

Main Contractor: Paul Y ITC Constructions Co., Ltd

Curtain Wall Consultant: Arup Façade Engineering

Façade Contractor: Builders Federal H.K

Curtain Wall System: Unitized

Height: 31 Floor

Scope of work: Supply and fabrication painted extrusion and sheet

No. 11 CHATTER ROAD (HONG KONG)



Client : Hong Kong Limited
Main Contractor : Gammon Construction
Limited., HK
Façade Designer: B Grimm MBM Metal Works
Façade Contractor: B Grimm MBM Metal Works

Curtain Wall System : Unitized
Completion : 2001

OVERSEAS PROJECT REFERENCES



ANOTHER PROJECTS (HONG KONG)

- ❖ Commercial Redevelopment at 2-10 Clamming Road
- ❖ Commercial Building, Connaught Road
- ❖ Windbond Electrical Corporation North Point Government
- ❖ Oxford House
- ❖ Ice House Street
- ❖ Island Place
- ❖ Hong Kong Convention Centre
- ❖ Tai Kok Tsui - MTR

UENO GAKUEN (TOKYO, JAPAN)

OVERSEAS PROJECT REFERENCES

Client: Sankyo Tateyama Aluminium Inc
Main Contractor : Shimizu Construction Inc
Facade Designer: Sankyo Tateyama Aluminium Inc
& B Grimm MBM Metal Works
Facade Contractor: B Grimm MBM Metal Works

Curtain Wall System: Unitized
Completion: 2007



ANOTHER PROJECT (JAPAN)



**Yamada Denki LABI,
Tokyo, Japan**

HAMAD MEDICAL CITY (DOHA, QATAR)

Client : Ministry of Municipal Affairs & Agriculture
Project Management: Hill International Overseas Ltd
Main Contractor :Joanmou & Paraskevaides Qatar J & P Avax SA
Facade Contractor :Josef Gartner

Curtain Wall System : Unitized
Scope of Work : Supply and assembling thermal brake painted extrusion
Completion: December 2006



ANOTHER PROJECT (QATAR)

Commercial Bank of Qatar, Doha, Qatar



ANOTHER PROJECTS (PHILIPPINES)

- ❖ Philamlife Tower
- ❖ J.G. Summit Center
- ❖ Citibank Card Centre
- ❖ Asian Star Building
- ❖ Discovery Centre
- ❖ Insular Life Towers
- ❖ Phinma Plaza



Health Research International of
Calgary, Canada

OVERSEAS PROJECT REFERENCES

ANOTHER PROJECTS

- ❖ Health Research International of Calgary, Canada
- ❖ Center Court Project, Australia
- ❖ Guang Hua, China
- ❖ Saigon World Trade Center, Vietnam
- ❖ Maldive, Sri Lanka
- ❖ Pornpat Thailand



Guang Hua, China



Maldives, Sri Lanka



World Trade Center Ho Chi Minh City
Saigon Vietnam

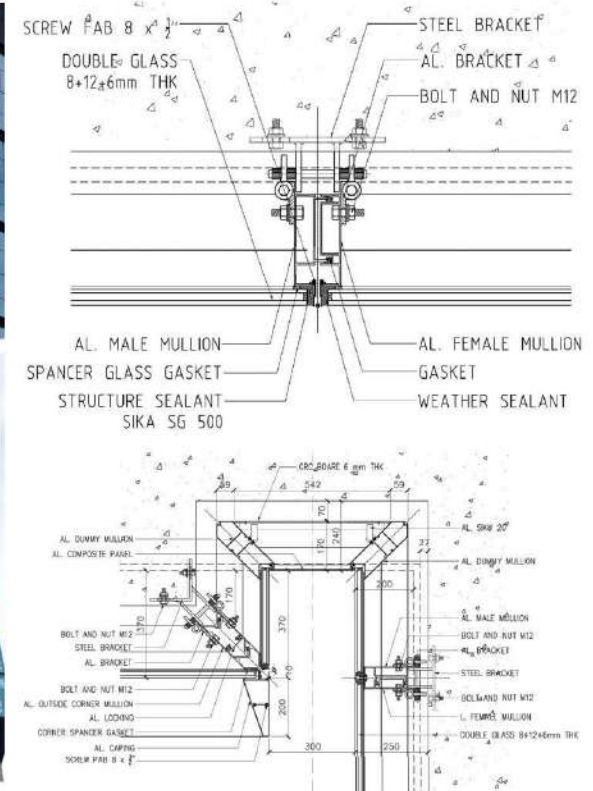


Center Court Project, Australia



INDONESIA PROJECT REFERENCES

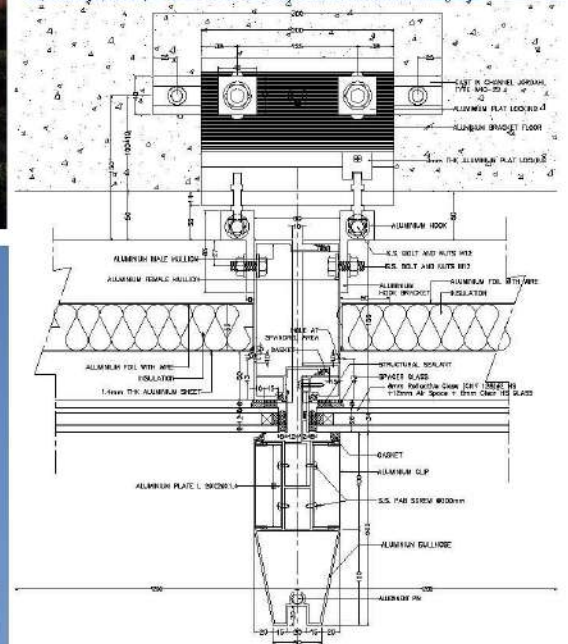
Thamrin Nine



Client : PT. Wisma Kartika
 Architect : PT. Dutacemat mandiri
 Main Contractor : NRC
 Location : JL.MH. Thamrin
 Curtain Wall System : Utilized
 Height : 1 Tower - 40 Floor
 Scope of Work : Drawing, Design, Budgeting & Estimating,
 Supply, Fabrication & Installation
 Area : 80.000 m2
 Completion : 2009



A tall, modern skyscraper with a blue glass facade, identified as WTC II, stands against a blue sky with scattered white clouds. The building has a distinctive stepped design. In the foreground, there is a construction site with orange safety barriers and a white barrier gate. A street lamp is visible on the left side of the frame.



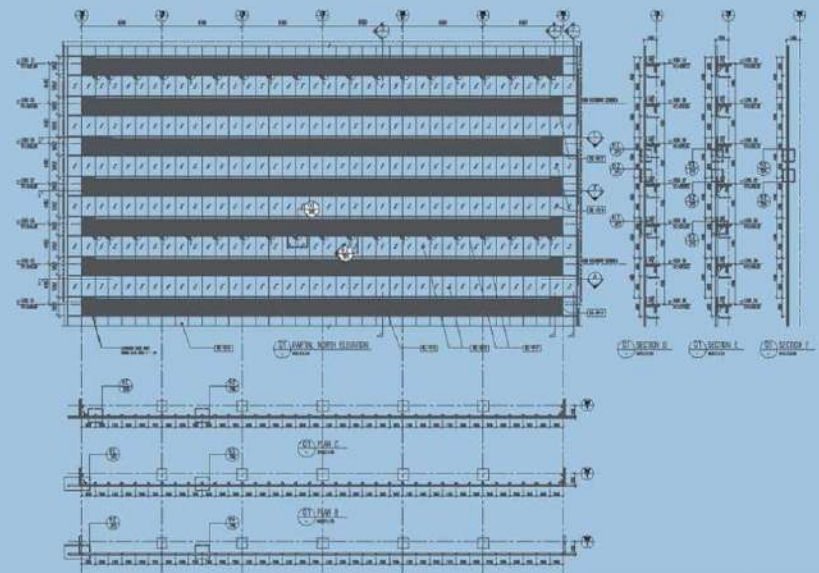
Project Name	: WTC 2
Location	: Jl. Komando, Karet , Setiabudi – Jakarta
Owner	: PT. JAKARTA LAND
Architect	: PT. AEDAS
	: PTI Architect
Main Contractor	: PT. Balfour Beatty Sakti Indonesia
Completion	: 2012
Height	: 1 Tower = Office = 31 Floor
Area	: + 80.000 m ²
Curtain wall System	: Utilized
Scope of Works	: Drawing, Design, Budgeting & Estimating, Supply, Fabrication & Installation.

World Trade Center 3

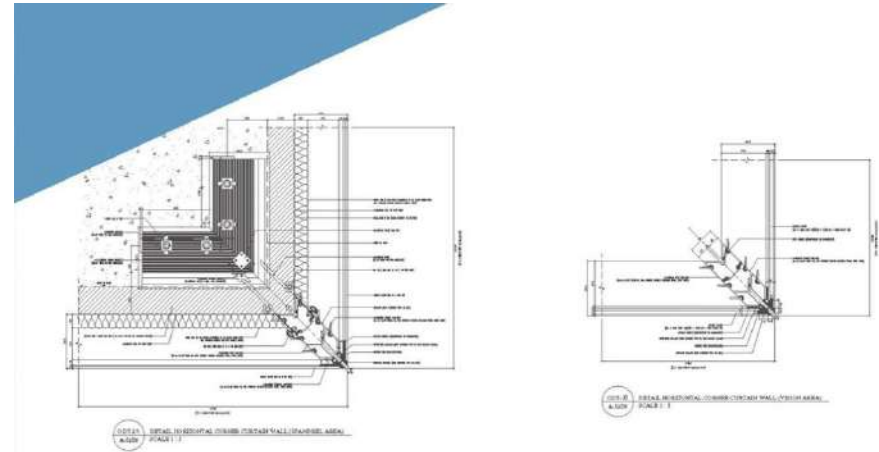


World Trade Center 3
(Office Building)

Project Name	: WORLD TRADE CENTRE (WTC) 3 - Jakarta, Indonesia
Location	: Jl. Jend Sudirman - Jakarta, Indonesia
Client	: PT. Jakarta Land
Main Contractor	: PT. Balfour Beatty Sakti Indonesia
Facade Consultant	: Meinhardt Facade Technology (S) Pte Ltd
Architect	: PT. Anggara Architeam
Completion	: 2017
Height	: 1 Tower = 44 Floor + Crown
Scope of Work	: Drawing, Design, Budgeting & Estimating, Supply, Fabrication & Installation
Area	: 48,000 m2
Curtain Wall System	: Unitized



Capital Place & Four season Hotel



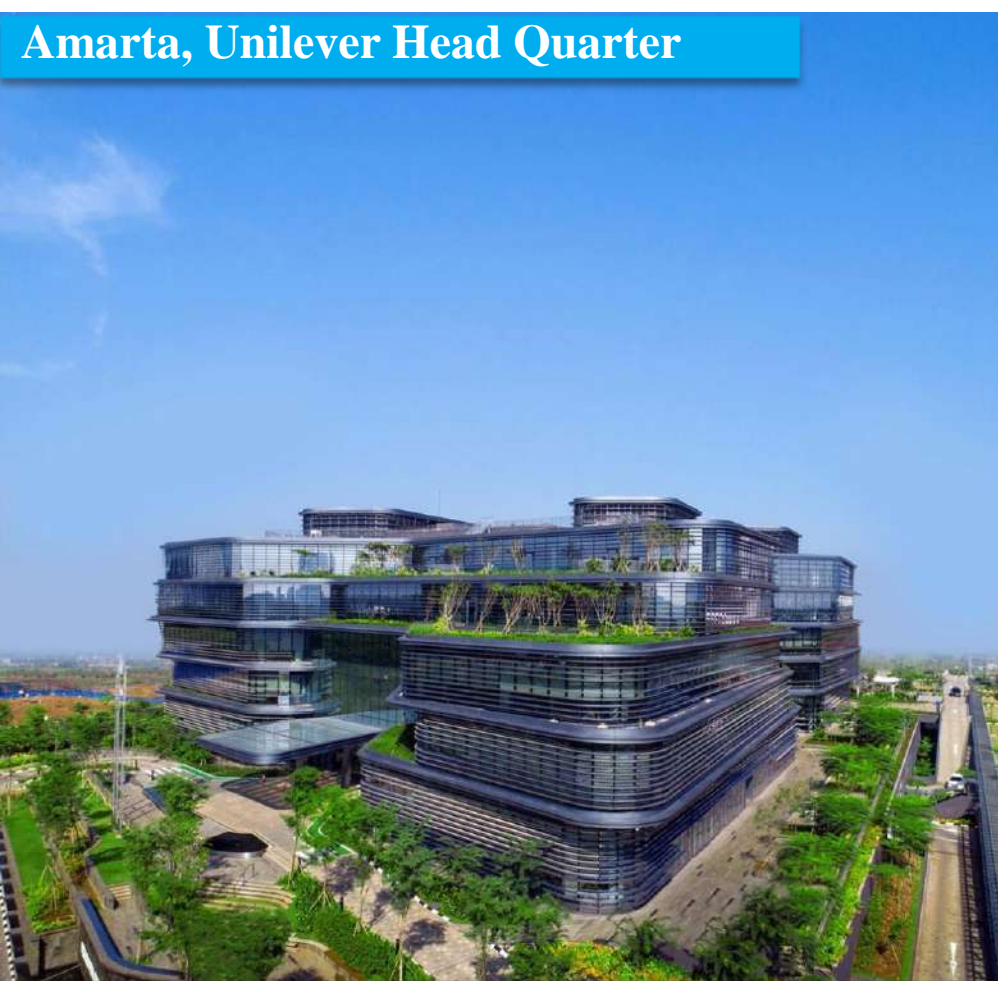
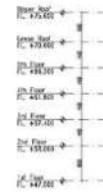
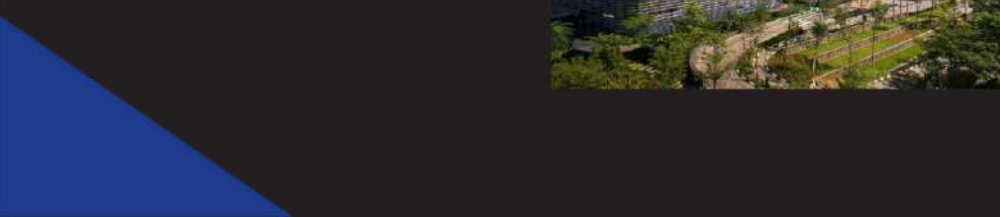
Project Name	: CAPITAL PLACE & FOUR SEASON HOTEL
Location	: Jl. Gatot Subroto - Jakarta, Indonesia
Client	: PT. Greenland Rajawali Utama
Main Contractor	: Ssangyong - Totalindo JO
Facade Consultant	: DSI-TTW Pte Ltd
Architect	: PT. Airmas Asri
Completion	: 2017
Height	: Office = 1 Tower, 48 Floor ; Hotel = 1 Tower, 21 Floor
Scope of Work	: Drawing, Design, Budgeting & Estimating, Supply, Fabrication & Installation
Area	: 96.000 m2
Curtain Wall System	: Unitized

Capital Place & Four Season Hotel

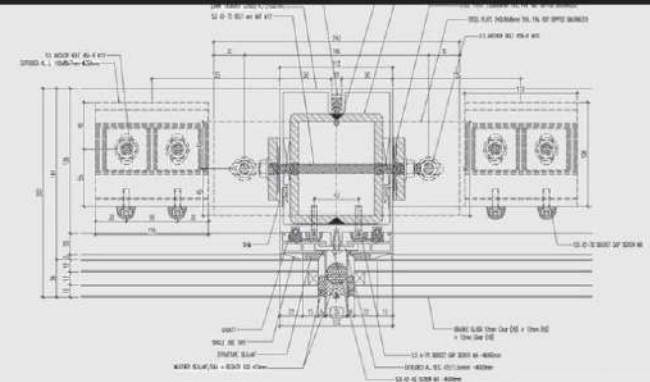
(Office & Hotel)



Amarta, Unilever Head Quarter

An aerial photograph of the Amarta Unilever Head Quarter building. The building is a large, modern structure with multiple stories, featuring glass facades and green roofs. It is surrounded by landscaped grounds with trees and a paved area. The sky is clear and blue.

Project Name	: AMARTA, Unilever Head Quarter
Location	: Tangerang , Indonesia
Client	: PT. Unilever Indonesia Tbk
Main Contractor	: BAM Decorient
Facade Consultant	: Inhabit Group (HK)
Architect	: Aedas Pte Ltd
Completion	: 2017
Height	: 1 Tower, 5 Floor
Scope of Work	: Drawing, Design, Budgeting & Estimating, Supply, Fabrication & Installation
Area	: 1 Tower, 5 Floor
Curtain Wall System	: Unitized

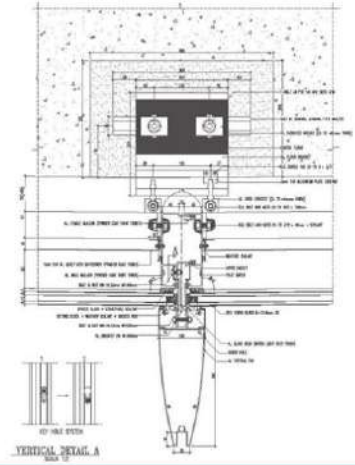


World capital Tower

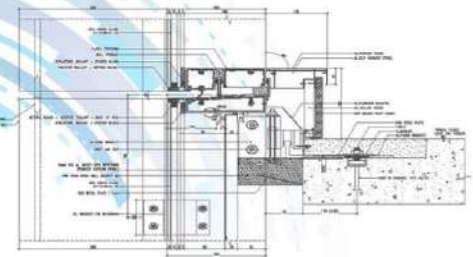


World Capital Tower

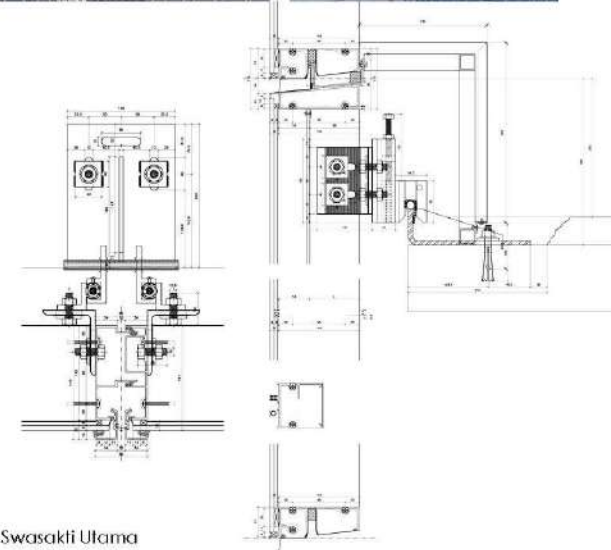
(Office Building)



Project Name	: WORLD CAPITAL TOWER
Location	: Jl. Lingkar Mega Kuningan - Jakarta, Indonesia
Client	: PT. Mega Kuningan Pinnacle
Main Contractor	: PT. Nusa Konstruksi Enjiniring Tbk
Facade Consultant	: Meinhardt Facade Technology (S) Pte Ltd
Architect	: AEDAS Pte
Completion	: Under Constructon
Height	: 1 Tower, 52 Floor
Scope of Work	: Drawing, Design, Budgeting & Estimating, Supply, Fabrication & Installation
Area	: 63,000 m2
Curtain Wall System	: Unitized

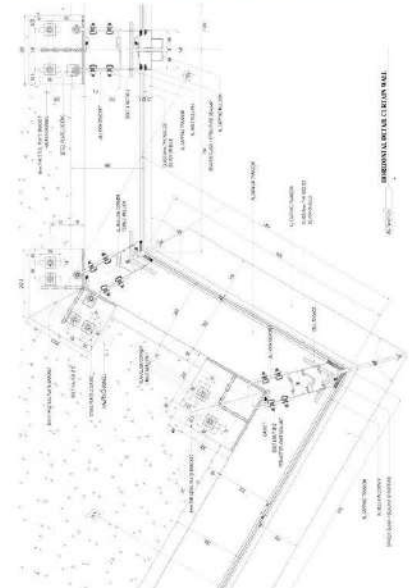


Bakrie Tower



Client : PT.Bakrie Swasakti Utama
 Architect : PT.Urbane Indonesia
 Main Contractor : PT.Hutama Karya
 Location : Jl. Jend.Sudirman
 Curtain Wall System : Unitized
 Height : 1 Tower, 52 Floor
 Scope of Work : Drawing, Design, Budgeting & Estimating,
 Supplay, Fabrication & Installation
 Area : 65.000m2
 Completion : 2009

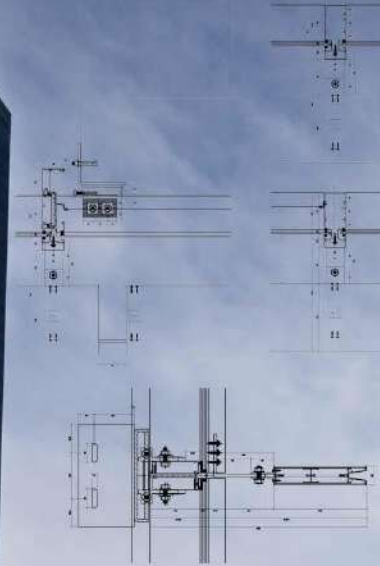
Pacific Place



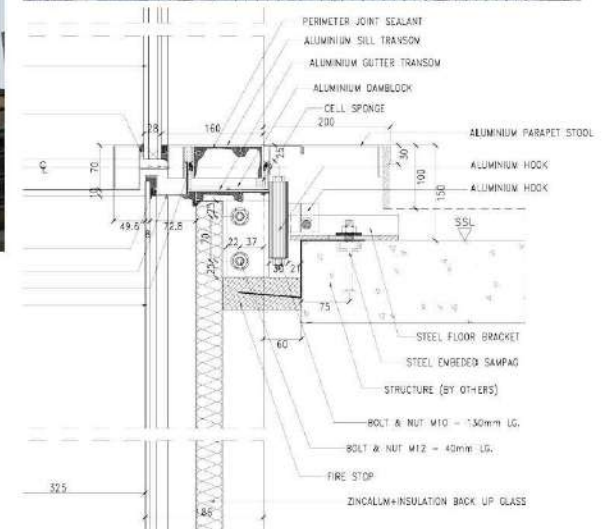
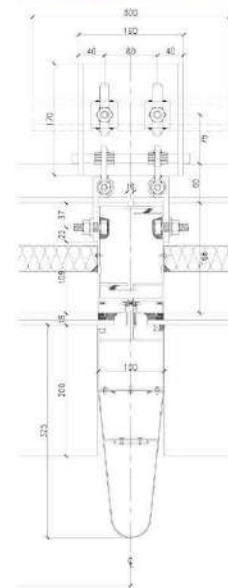
Client : PT. Pacific Place
 Architect : PT. Aimas Asri
 Main Contractor : PT. Acset Indonusa
 Location : Kawasan SCBD
 Curtain Wall System : Utilized
 Height : 3 Tower + 1 Mall
 Scope of Work : Drawing, Design, Budgeting & Estimating,
 Supply, Fabrication & Installation
 Area : 120.000 m2
 Completion : 2007

Grand Indonesia

Client : PT. Grand Indonesia
Architect : RTKL, Los Angeles, USA
PT. Anggara Architeam
Main Contractor : PT. Duta Graha Indah
Location : JL. MH Thamrin
Curtain Wall System : Unitized
Height : 2 Tower (Office & Residence)
Scope of Work : Drawing, Design, Budgeting
& Estimating, Supply,
Fabrication & Installation
Area : Office = 60,000m²
Residence = 48,000m²
Completion : 2008

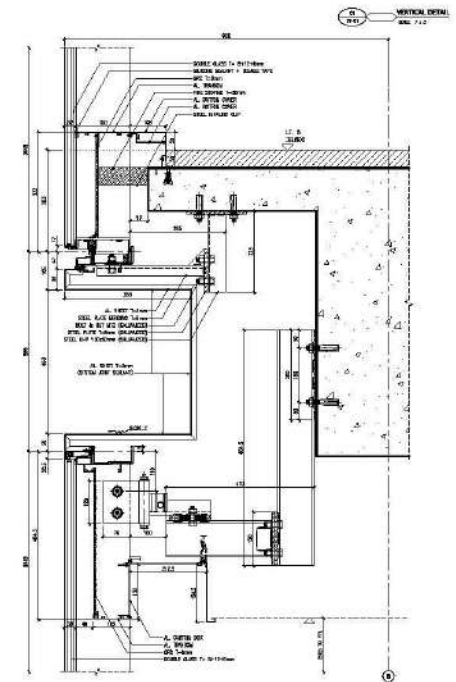
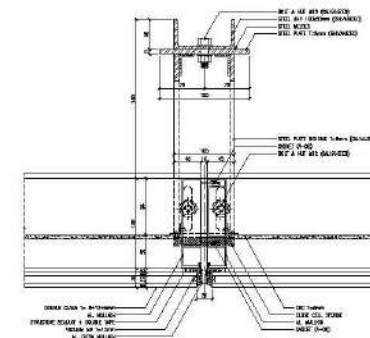


Plaza Indonesia

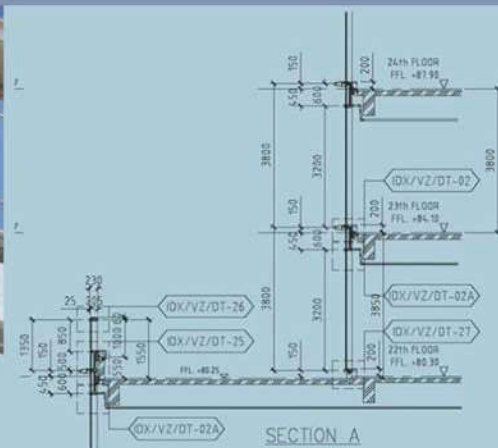


Client : Ssang Yong – Totalindo JO
 Architect : PT Arkonin
 Main Contractor : Ssang Yong – Totalindo JO
 Location : Jl. MH Thamrin
 Curtain Wall System : Utilized
 Height : 2 Tower (Office & Residential)
 Scope of Work : Drawing, Design, Budgeting & Estimating,
 Supply, Fabrication & Installation
 Area : 220.998 m2
 Completion : 2009

Esa Sampoerna

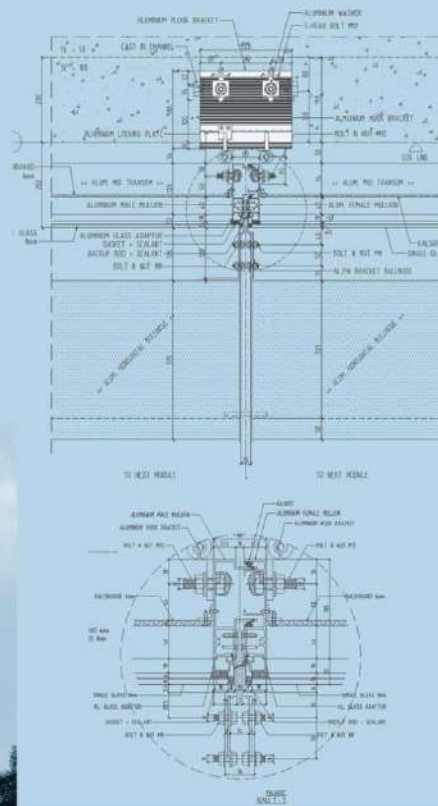


Client : PT. Lancar Sentosa Bestari
 Architect : Duta Cermat Mandiri
 Main Contractor : PT. TATA
 Location : Jl. Kertajaya Indah Timur no. 9, Surabaya
 Curtain wall system : utilized
 Scope of work : Utilized curtain wall, alum. solid cladding, canopy, lipslang helipad
 Area : ± 6.900 m2
 Completion : Juni 2011



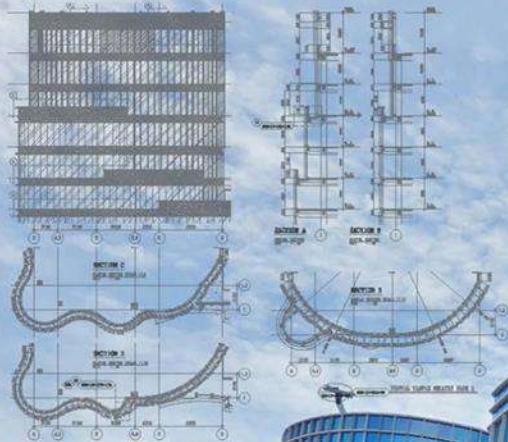
La Vie Suite Apartment

La Vie Suite Apartment (Residence)



Project Name	: LAVIE ALL SUITES APARTMENT
Location	: Setiabudi - Jakarta, Indonesia
Client	: PT. Zaman Bangun Perwita
Main Contractor	: PT. Total Bangun Persada
Facade Consultant	: Paul Adam Facades
Architect	: DP Architect Pte Ltd PT. Anggara Arsiteam
Completion	: 2018
Height	: 2 Tower (1 Tower = 32 Floor + Crown ; 1 Tower = 33 Floor + Crown)
Scope of Work	: Drawing, Design, Budgeting & Estimating, Supply, Fabrication & Installation
Area	: 58.300 m2
Curtain Wall System	: Unitized





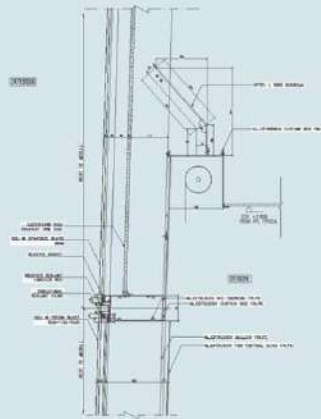
Landmark Pluit (Office Building)

Project Name	: LANDMARK PLUIT
Location	: Jl. Pluit Selatan Raya - Jakarta, Indonesia
Client	: PT. Prasto Propertindo
Management Construction	: PT. Prosys Bangun Persada
Facade Consultant	: -
Architect	: PT. Sinar Mas
Completion	: 2016
Height	: Blok A = 14 Floor + Crown Blok B = 16 Floor + Crown Blok C = 11 Floor + Crown Blok D = 14 Floor + Crown
Scope of Work	: Drawing, Design, Budgeting & Estimating, Supply, Fabrication & Installation
Area	: 124.000 m2
Curtain Wall System	: Unitized

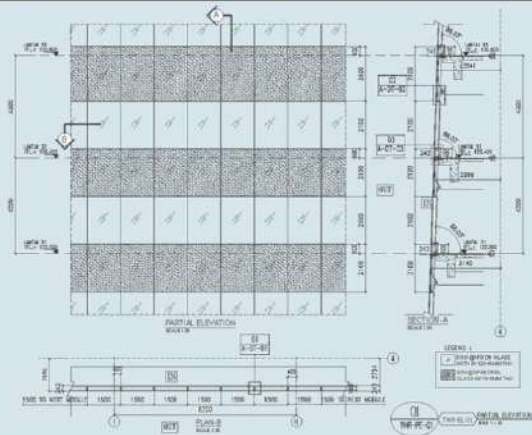


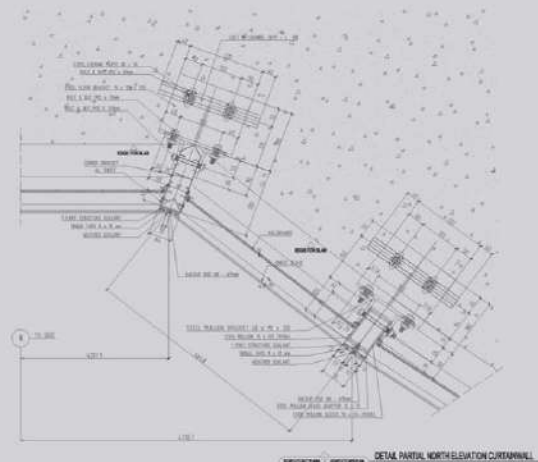
The Tower

(Office Building)



Project Name	: THE TOWER
Location	: Jl. Gatot Subroto Kav. 12 - Jakarta, Indonesia
Client	: PT. Alfa Goldland Realty / PT. Alam Sutera Realty Tbk
Main Contractor	: PT. Total Bangun Persada Tbk
Facade Consultant	: Paul Adam Facades
Architect	: PT. Duta Cermat Mandiri
Completion	: 2017
Height	: 1 Tower, 50 Floor
Scope of Work	: Drawing, Design, Budgeting & Estimating, Supply, Fabrication & Installation
Area	: 41.000 m2
Curtain Wall System	: Unitized





The Convergence Indonesia
(Office Building)

Project Name	: THE CONVERGENCE INDONESIA
Location	: Jl. HR Rasuna Said - Jakarta, Indonesia
Client	: PT. Andika Multi Karya
Main Contractor	: PT. Adhi Karya (Persero) Tbk
Facade Consultant	: Meinhardt Façade Technology (S) Pte Ltd
Architect	: PT. Airmas Asri
Completion	: 2017
Height	: 1 Tower, 30 Floor
Scope of Work	: Drawing, Design, Budgeting & Estimating, Supply, Fabrication & Installation
Area	: 25,540 m2
Curtain Wall System	: Unitized



Pondok Indah Hotel & Residence

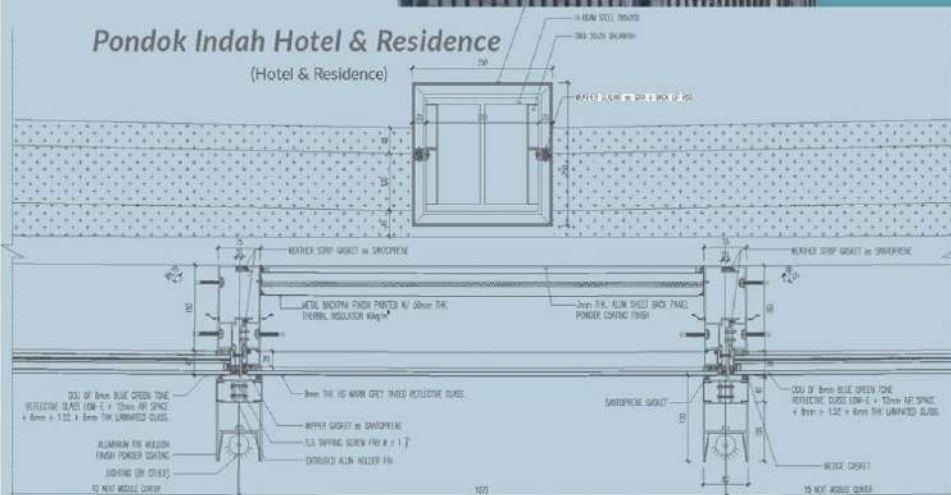
Pondok Indah Hotel & Residence
(Hotel & Residence)

Project Name	: Pondok Indah Hotel & Residence
Location	: Pondok Indah - Jakarta, Indonesia
Client	: PT. Pondok Indah Hotel
Management Construction	: PT. Metropolitan Kentjana
Facade Consultant	: Paul Adam Facades
Architect	: PT. Perentjana Djaja
Completion	: 2017
Height	: Hotel = 23 Floor + 2 Crown Residence = 20 Floor + 3 Crown
Scope of Work	: Drawing, Design, Budgeting & Estimating, Supply, Fabrication & Installation
Area	: 37.500 m ²
Curtain Wall System	: Unitized

60 | INDEX Company Profile



(Hotel & Residence)



Project Name	:	Pondok Indah Hotel & Residence
Location	:	Pondok Indah - Jakarta, Indonesia
Client	:	PT. Pondok Indah Hotel
Management Construction	:	PT. Metropolitan Kentjana
Facade Consultant	:	Paul Adam Facades
Architect	:	PT. Perentjana Djaja
Completion	:	2017
Height	:	Hotel = 23 Floor + 2 Crown Residence = 20 Floor + 3 Crown
Scope of Work	:	Drawing, Design, Budgeting & Estimating, Supply, Fabrication & Installation
Area	:	37.500 m2
Curtain Wall System	:	Unitized

OUR NEW DIVISION





Introducing the harmony of sophisticated design, simplified outlooks and comfortable use of our new home development products, HOMELUX Door & Window systems, in your home, apartment and office.

DESIGN AND MANUFACTURE

HOMELUX Door & Window systems are designed with accuracy in every detail of the product and manufactured with reliability in every materials that comply with international standards to deliver a broad range of solutions on both aesthetic and functional level.

COMFORT AND INTEGRITY

Discover a completely new experience with maximum operational comfort and structural integrity.

All HOMELUX Door & Window systems are tested for functional performance and protection, without compromising visual appearance.



ALUMINIUM DOOR & WINDOW SYSTEM



FOLDING DOOR FD83

FEATURES

- Sash height up to **4500** mm.
- Robust roller with top and bottom roller guide.
- Adoptable design with single or double glass.
- Large opening for wider view and circulation.



SLIDING DOOR
Flush Track
SD40

FEATURES

- Sash height up to 3000 mm.
- Sash width up to 1500 mm.
- Flush track.
- Frame depth 106 mm.



SLIDING DOOR
with *Mosquito Screen*
SD40M

FEATURES

- Sash height up to 3000 mm.
- Sash width up to 1000 mm.
- Mosquito screen : Stainless steel, Aluminium.
- Frame depth 159 mm.
- Flush track is available.



LIFT AND SLIDE DOOR LS50

FEATURES

- Sash height up to 3000 mm.
- Sash width up to 3000 mm.
- Fitting with 4 wheel carriages makes easy to open the door.
- Flexible glass : single and double glass.



SLIDING WINDOW
with Mosquito Screen
SW40

FEATURES

- Sash height up to 1800 mm.
- Sash width up to 800 mm.
- Mosquito screen : Stainless steel, Aluminium.
- Frame depth 159 mm.



Open



Closed



Handle



Butt hinge

2 IN 1 CASEMENT and SCREEN WINDOW CW40

FEATURES

- Sash height up to 1500 mm.
- Sash width up to 700 mm.
- Mosquito screen : Stainless steel, Aluminium.
- Glass window and screen can be open together.



www.indalcorp.com

www.homelux.co.id

THANK YOU

For Further Information Please Contact:

PT. Indal Aluminium Industry Tbk.

Factory :

Kompleks Maspion Unit I
Desa Sawotratap, Gedangan
Sidoarjo - Indonesia 61254

Phone : +62 31 853 6993

Fax : +62 31 853 2812

Email : marketing@indalcorp.com
homelux@indalcorp.com

 [homelux.id](https://www.instagram.com/homelux.id)